



# Installations- und Konfigurationsanleitung — eCharge Hardy Barth cPH2 2T22

Version:2023.3.1

## Table of Contents

<b>1. Introduction</b>	<b>2</b>
1.1. Legal provisions . . . . .	2
1.2. Qualification of the installing electrician. . . . .	2
1.3. Symbols used . . . . .	2
1.4. Darstellungskonventionen . . . . .	2
<b>2. Produktbeschreibung</b>	<b>2</b>
2.1. Scope of delivery . . . . .	2
2.2. Prerequisites . . . . .	3
<b>3. Commissioning</b>	<b>4</b>
3.1. Connecting the meter . . . . .	5
3.2. Configuration . . . . .	6
3.3. Updating the charging station firmware . . . . .	7
<b>4. Install Symphon-E App eCharge Hardy Barth cPH2 2T22 Ladestation</b>	<b>9</b>
4.1. Direct Installation . . . . .	9
4.1.1. Redeem already registered license key . . . . .	12
4.1.2. Redeeming a new license key . . . . .	13
4.2. Edit EMS app . . . . .	17
<b>5. Contact</b>	<b>18</b>
<b>6. Verzeichnisse</b>	<b>19</b>
6.1. Abbildungsverzeichnis . . . . .	19

## 1. Introduction

### 1.1. Legal provisions

The information contained in these documents is the property of Heckert Solar GmbH. Publication, in whole or in part, requires the written consent of Heckert Solar GmbH.

Subject to changes and printing errors!

### 1.2. Qualification of the installing electrician

A qualified electrician is a person who has the necessary experience and training:

- Setting up, switching on, switching off, disconnecting, short-circuiting and repairing circuits and devices
- Standard maintenance and use of protective devices in accordance with current safety standards
- First aid/emergency care
- Current knowledge of local regulations, standards and guidelines

### 1.3. Symbols used

Before reading the manual, you should familiarize yourself with the different types of safety warnings. You should also familiarize yourself with the importance of the safety warnings.

### 1.4. Darstellungskonventionen





	This symbol indicates an imminent danger. If this danger is not avoided, it can lead to death or serious injury.
	This symbol indicates a potentially dangerous situation. If this dangerous situation is not avoided, it may result in minor or moderate injury.
	This symbol indicates a warning. Failure to observe this warning may result in damage and/or destruction of the system.
	This symbol indicates a note. It is recommended that the note be observed.

Table 1. Darstellungskonventionen

## 2. Produktbeschreibung

### 2.1. Scope of delivery

Prüfen Sie, nachdem Sie die Lieferung erhalten haben, ob alle Bestandteile mitgeliefert wurden. Prüfen Sie den Lieferumfang auf Beschädigungen. Sollte etwas fehlen oder beschädigt sein, wenden Sie sich bitte sofort an den Lieferanten. Folgende Komponenten sind in der Lieferung enthalten:

- eCharge Hardy Barth cPH2 2T22 Ladestation

- 2 x 11 kW integriertes 4-Meter-Spiralkabel mit Typ-2 Stecker (IEC 62196-2)
- Installations- und Konfigurationsanleitung — Typ-2-Ladestation eCharge Hardy Barth cPH2 2T22
- Handbuch — Ladestation cPH2

## 2.2. Prerequisites

Für den Einsatz der Ladestation ist erforderlich:

- Symphon-E App eCharge Hardy Barth cPH2 2T22 Ladestation



Die »Symphon-E App eCharge Hardy Barth cPH2 2T22 Ladestation« ist nicht im Lieferumfang enthalten. Diese muss — falls noch nicht vorhanden — zusätzlich erworben werden.

## 3. Commissioning

## 3. Commissioning



Please follow the instructions in the "Installation and Operating Instructions cPH2 Charging Station" to install the Hardy-Barth charging station.  
[Installation and operating instructions cPH2 charging station](#)



The "Configuration Manual" for the Salia board should also be read and internalized:  
[Configuration manual — Salia board](#)



This quick guide refers to the original user manuals.  
 It serves as an installation aid for qualified electricians in the area of communication interfaces, but is not a substitute for studying the user manuals.

Once the charging station has been installed, it must be connected to the customer network via the two network interfaces (LAN) of the two Salia boards (Master, Slave).

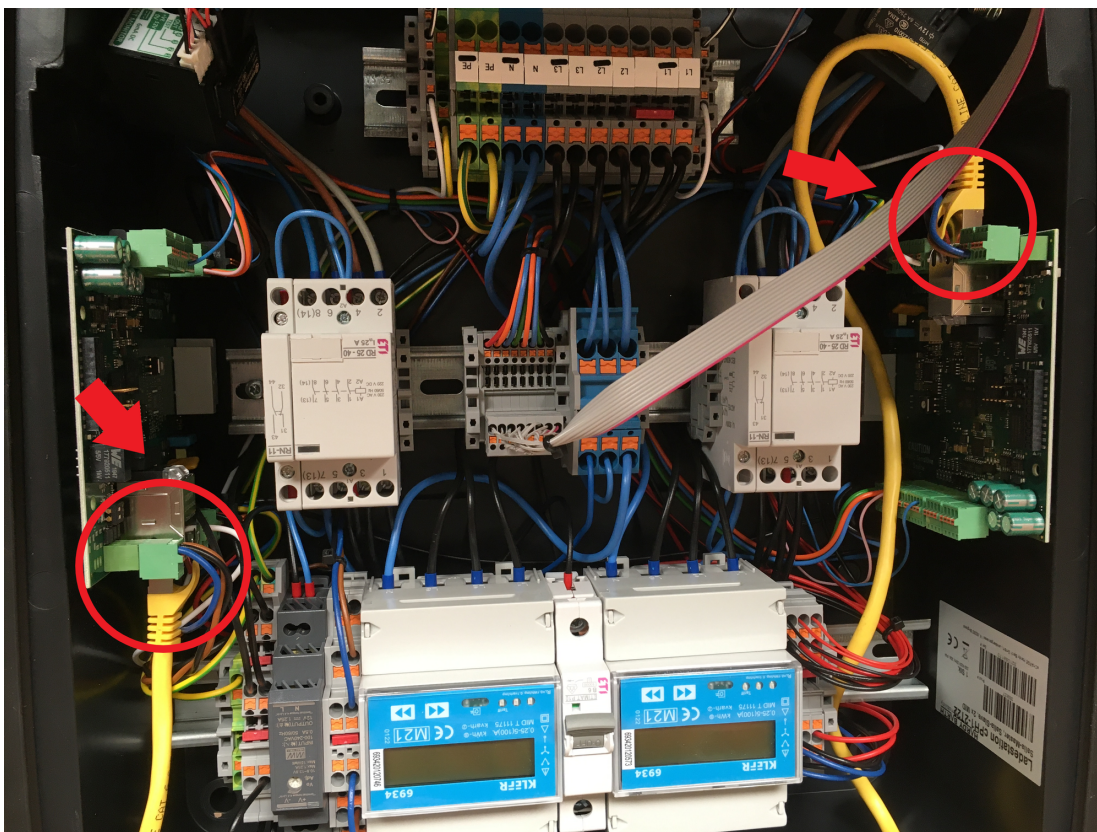


Figure 1. Network interfaces (LAN) — Salia board



On delivery, the two network interfaces are connected to each other with a LAN cable. This cable must be disconnected so that each board can be connected separately to the customer network.

### 3.1. Connecting the meter

With the cPH2 2T22 model, the two necessary meters are already installed in the charging station. No further work is necessary here.

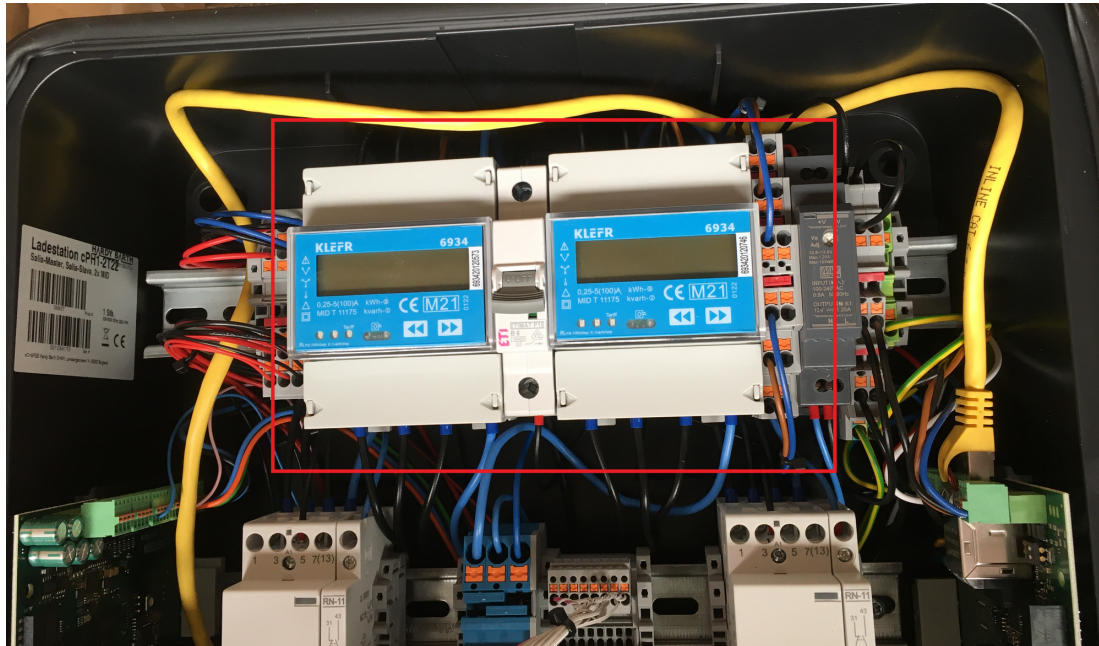


Figure 2. Meter



From our experience, the meter plug connections on the circuit boards are sometimes a little loose. Make sure that *both* plugs are connected firmly.

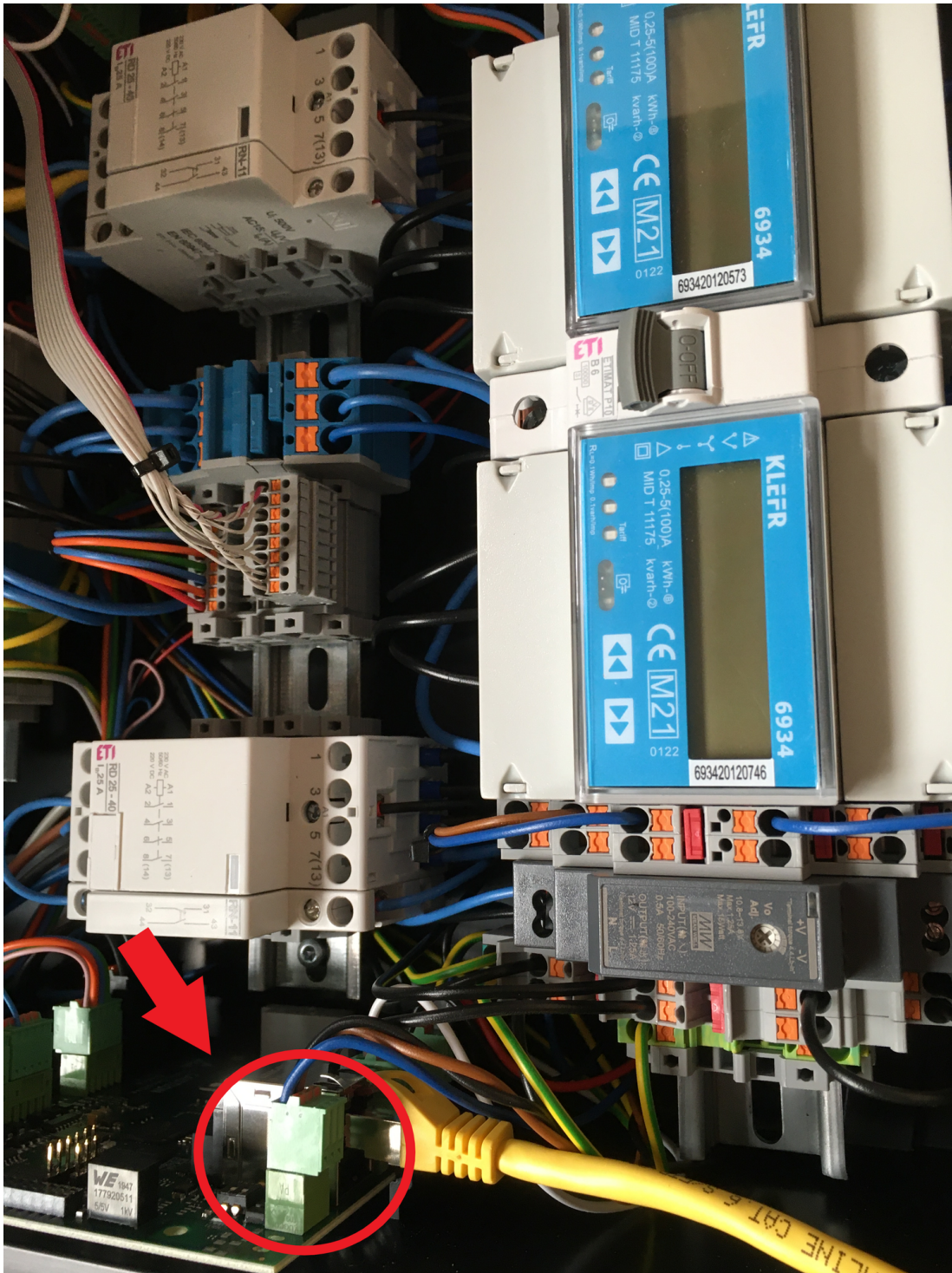


Figure 3. Meter plug connection

### 3.2. Configuration

The cPH2 2T22 model is already preconfigured. No further work is required here.

By default, the first charging point of the charging station can be reached at the IP address **192.168.25.30**, the second charging point at the IP address **192.168.25.31** and so on.

We recommend that you always use the latest firmware to ensure that all the latest functions of the charging station can be used.

### 3.3. Updating the charging station firmware

We recommend always using the latest firmware to ensure that all the latest functions of the charging station can be used.

This can be obtained from the manufacturer's website of eCharge Hardy Barth or directly via the link below:  
[Salia eCharge Firmware](#)

The firmware can then be updated via the web interface of the charging station (see [Web interface — Charging station](#)).

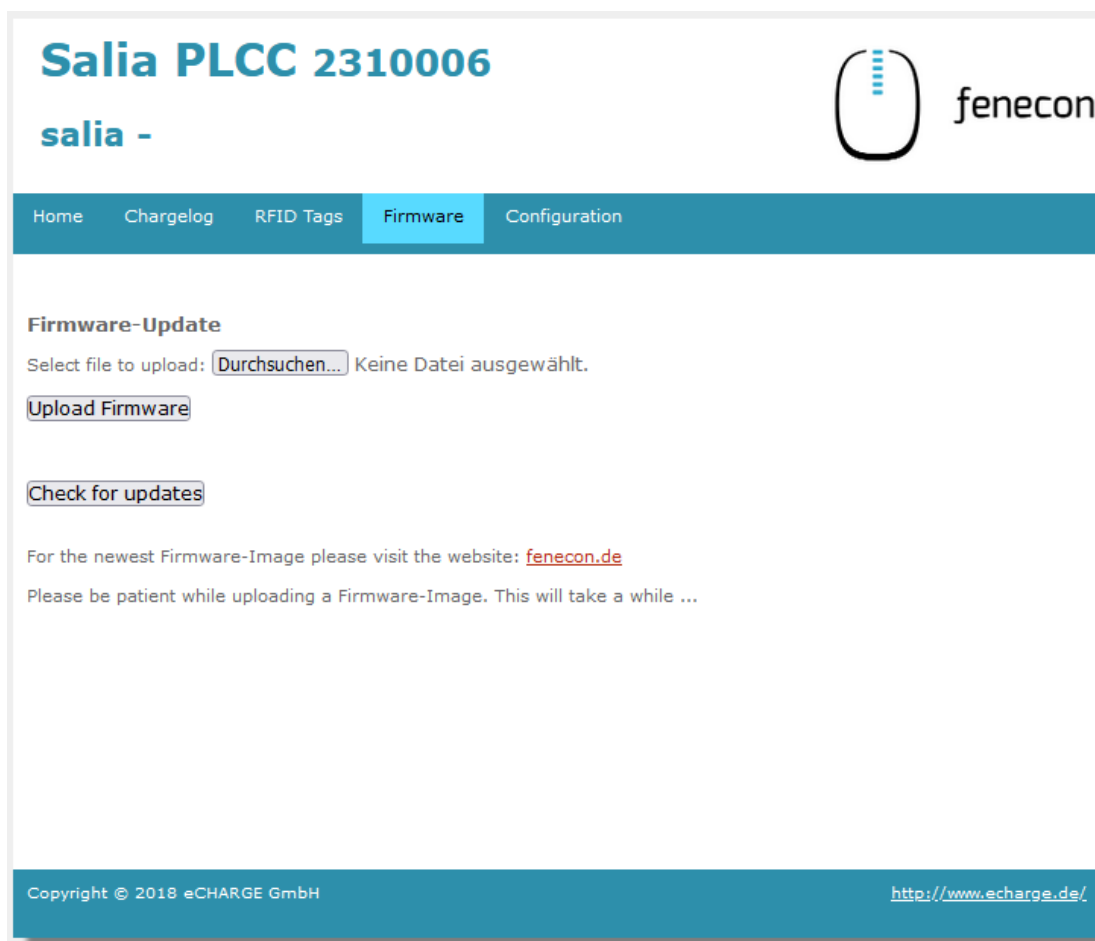


Figure 4. Web interface — Charging station

Then proceed as follows:

1. Open the *Firmware* tab
2. Select previously downloaded firmware file with *Browse....*
3. Click on *Upload Firmware*



The *Check for updates* function is only available from version 1.50.0 and up.

The software update has now been completed.



### 3.3. Updating the charging station firmware

---

Die Konfiguration ist hiermit abgeschlossen.

## 4. Install Symphon-E App eCharge Hardy Barth cPH2 2T22 Ladestation

In the Symphon-E App Center you will find all installable Symphon-E Apps — such as the Symphon-E App eCharge Hardy Barth cPH2 2T22 Ladestation.



In the user manual [Symphon-E App Center](#) you will find detailed instructions on how to use the Symphon-E App Center. It also describes how to register and redeem a license key.

There are two ways to install an app via the Symphon-E App Center. Only the [\[Direct installation\]](#) is described below, whereby a license key is registered and redeemed in the EMS.

### 4.1. Direct Installation

To install the Symphon-E App eCharge Hardy Barth cPH2 2T22 Ladestation directly, go to the overview of the Symphon-E App Center.



Only apps from the "Available" category can be installed.

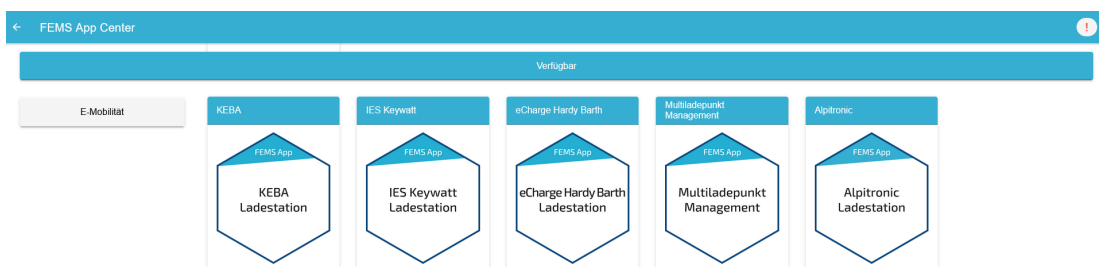


Figure 5. App installation — Variant 2: Step 1

Select the Symphon-E App eCharge Hardy Barth cPH2 2T22 Ladestation by clicking on it.

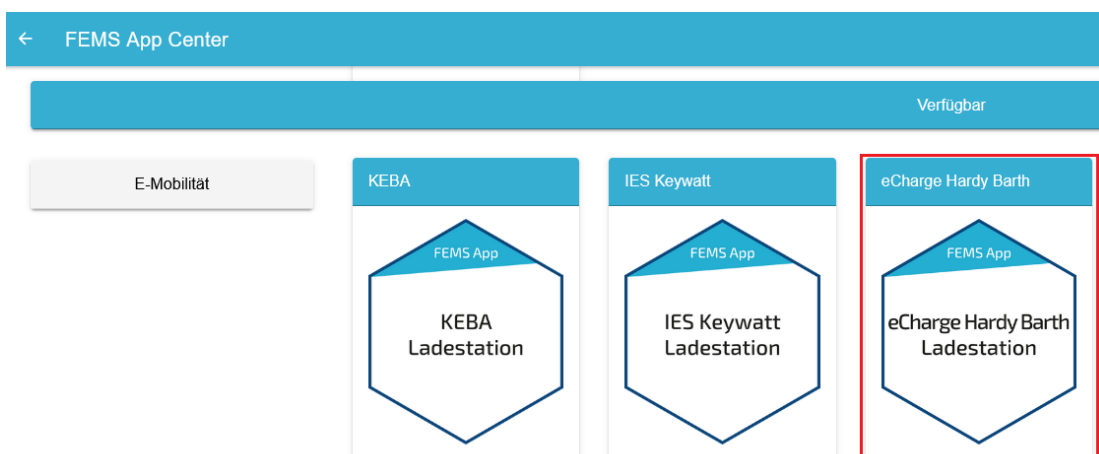


Figure 6. App installation — Variant 2: Step 2

You will then be taken to the app overview.

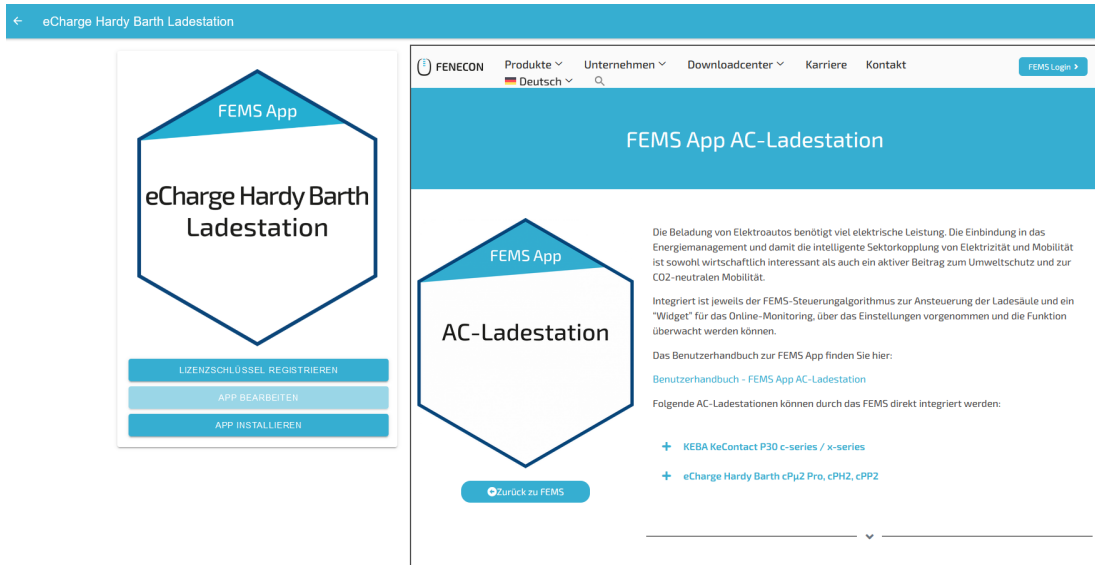


Figure 7. App installation — Variant 2: Step 3

Click on the "Install app" button.



Figure 8. App installation — Variant 2: Step 4

An input mask for redeeming a license key appears.

### Lizenzschlüssel einlösen ✕

Geben Sie hier den Lizenzschlüssel ein, den Sie mit der Bestellung der App erhalten haben

Bereits registrierten Lizenzschlüssel einlösen?

---

Registrierte Lizenzschlüssel\* XXXX-XXXX-XXXX-XXXX ▼

---

Lizenzschlüssel\* XXXX-XXXX-XXXX-XXXX

---

**ABBRECHEN** **LIZENZSCHLÜSSEL EINLÖSEN**

Figure 9. App installation — Variant 2: Step 5

You have two options here.

#### 4.1.1. Redeem already registered license key

If you want to redeem an already registered license key, select it (1). Then click on the button of the same name to redeem the selected license key (2).

### Lizenzschlüssel einlösen ✕

Geben Sie hier den Lizenzschlüssel ein, den Sie mit der Bestellung der App erhalten haben

Bereits registrierten Lizenzschlüssel einlösen?

---

Registrierte Lizenzschlüssel\* **1** → XXXX-XXXX-XXXX-XXXX ▼

---

Lizenzschlüssel\* XXXX-XXXX-XXXX-XXXX

---

**ABBRECHEN** **LIZENZSCHLÜSSEL EINLÖSEN**

**2** ↑

Figure 10. App installation — Variant 2: Step 5a

### 4.1.2. Redeeming a new license key

If you have not yet registered a license key or wish to redeem a new license key, enter the 16-digit key in the corresponding field (1) and then click on "Validate license key" (2). The entered license key is then checked for validity.

**Lizenzschlüssel einlösen** ✕

Geben Sie hier den Lizenzschlüssel ein, den Sie mit der Bestellung der App erhalten haben

Bereits registrierten Lizenzschlüssel einlösen?

Registrierte Lizenzschlüssel\* XXXX-XXXX-XXXX-XXXX ▼

Lizenzschlüssel\* XXXX-XXXX-XXXX-XXXX 1 →

2 ↑

Figure 11. App installation — Variant 2: Step 5b

If the license key is valid, it can be redeemed by clicking on the button of the same name. If the license key is recognized as invalid, please check your entry and try again.

Lizenzschlüssel einlösen
✕

Geben Sie hier den Lizenzschlüssel ein, den Sie mit der Bestellung der App erhalten haben

Bereits registrierten Lizenzschlüssel einlösen?

---

Registrierte Lizenzschlüssel\* XXXX-XXXX-XXXX-XXXX ▼

---

Lizenzschlüssel\* XXXX-XXXX-XXXX-XXXX

---

ABBRECHEN

LIZENZSCHLÜSSEL EINLÖSEN




Figure 12. Redeeming a new license key: Step 6

You will then be taken to the installation wizard for Symphon-E App eCharge Hardy Barth cPH2 2T22 Ladestation.

eCharge Hardy Barth Ladestation

Anzahl Ladepunkte	1 ▼
Alias*	eCharge Hardy Barth Ladestation
IP-Adresse*	192.168.25.30
Phasenrolation <small>Verkabelung der einzelnen Phasen der Ladestation zu den Phasen im Netz</small>	L1_L2_L3 ▼

APP INSTALLIEREN

Figure 13. App installation — Variant 2: Step 7

Some of the input fields are pre-filled. Nevertheless, enter your data if it differs from the default values (e. g. IP address). Otherwise, the default values can be retained (e. g. port, Modbus unit ID).



Mandatory fields are marked with \*



Check your entries and make sure that they are correct. Otherwise the respective app will not work properly!

For the Hardy Barth eCharger cPH2 2T22, please select "2" for the number of charging points.

Use the drop-down menu to select the number of charging points.

eCharge Hardy Barth Ladestation

Anzahl Ladepunkte 1

Alias\* eCharge Hardy Barth Ladestation

IP-Adresse\* 192.168.25.30

Phasenrotation L1\_L2\_L3  
Verkabelung der einzelnen Phasen der Ladestation zu den Phasen im Netz

Anzahl Ladepunkte

1

2

CANCEL OK

Figure 14. App installation — Variant 2: Step 8

Confirm with "OK".

Please note that the IP addresses for the right and left charging points of the Hardy Barth eCharger must be entered separately.

eCharge Hardy Barth Ladestation

Anzahl Ladepunkte 2

Ladepunkt 1

Alias\* eCharge Hardy Barth Ladestation - Rechts

IP-Adresse\* 192.168.25.30

Ladepunkt 2

Alias\* eCharge Hardy Barth Ladestation - Links

IP-Adresse\* 192.168.25.31

Begrenzung Maximaler Netzbezug

Phasenrotation L1\_L2\_L3  
Verkabelung der einzelnen Phasen der Ladestation zu den Phasen im Netz

APP INSTALLIEREN

Figure 15. App installation — Variant 2: Step 9

From the second charging point, a limitation of the maximum grid consumption in watts must be set.



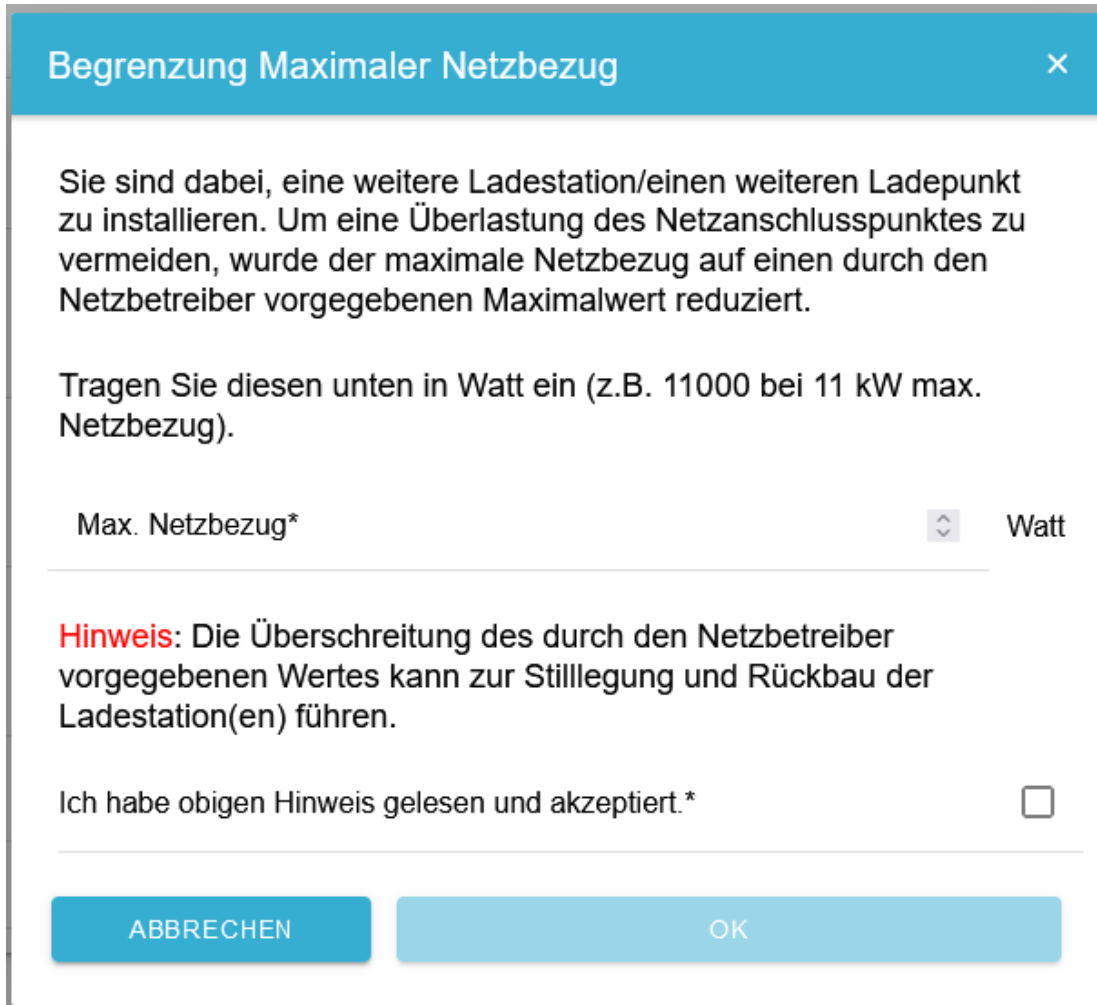


Figure 16. App installation — Variant 2: Step 10

Please confirm that you have read the note and filled in the value correctly.

Confirm with "OK".

Then click on "Install app".

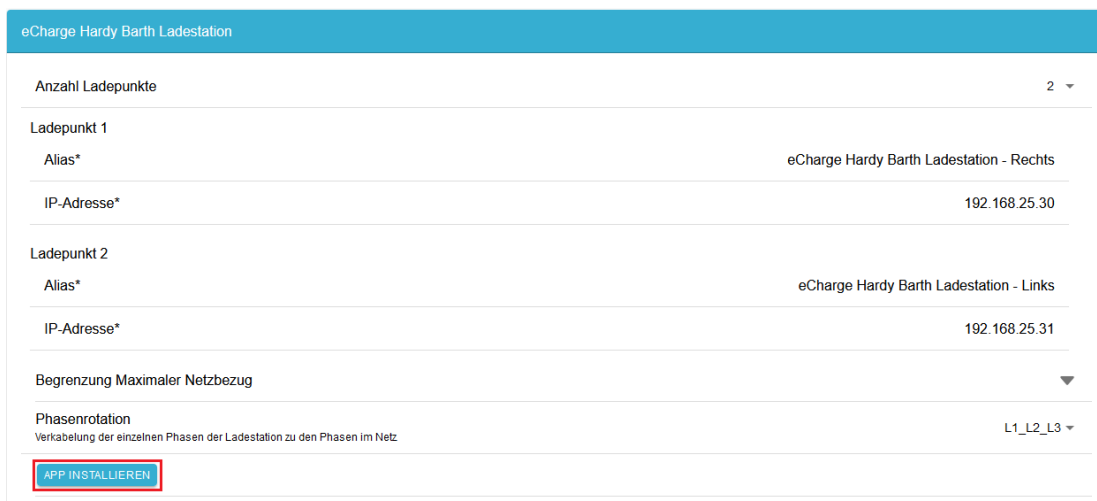


Figure 17. App installation — Variant 2: Step 11

Once the installation process is complete, the new app appears in the overview of the Symphon-E App Center in the "Installed" category.

## 4.2. Edit EMS app



Apps that have already been installed can be subsequently edited to change configuration settings. To do this, select the respective app in the Symphon-E App Center overview and click on the "Edit app" button. Detailed instructions are found in the user manual [Symphon-E App Center](#).

Die Symphon-E App eCharge Hardy Barth cPH2 2T22 Ladestation wurde erfolgreich installiert.

## 5. Contact

For support, please contact:

Symphon-E Service

Telephone service: +49 (0) 371 45 85 68 - 100

E-mail service: [symphon-e@heckert-solar.com](mailto:symphon-e@heckert-solar.com)

## 6. Verzeichnisse

### 6.1. Abbildungsverzeichnis

[Figure 1. Network interfaces \(LAN\) — Salia board](#)

[Figure 2. Meter](#)

[Figure 3. Meter plug connection](#)

[Figure 4. Web interface — Charging station](#)

[Figure 5. App installation — Variant 2: Step 1](#)

[Figure 6. App installation — Variant 2: Step 2](#)

[Figure 7. App installation — Variant 2: Step 3](#)

[Figure 8. App installation — Variant 2: Step 4](#)

[Figure 9. App installation — Variant 2: Step 5](#)

[Figure 10. App installation — Variant 2: Step 5a](#)

[Figure 11. App installation — Variant 2: Step 5b](#)

[Figure 12. Redeeming a new license key: Step 6](#)

[Figure 13. App installation — Variant 2: Step 7](#)

[Figure 14. App installation — Variant 2: Step 8](#)

[Figure 15. App installation — Variant 2: Step 9](#)

[Figure 16. App installation — Variant 2: Step 10](#)

[Figure 17. App installation — Variant 2: Step 11](#)